

Description & Features

- Ranges 0-25 mbar up to 0-25 bar
- Scale angle 270°
- Accuracy class 1.6%

Specifications

Dial Size

4"(100mm), 6"(150mm)
White aluminum with black figures

Pressure range

0.36psi upto 360psi (25mbar upto 25bar)

Case

304 stainless steel case and ring - bayonet bezel

Pressure element

AISI 316Ti 1.4571 st. st. independent diaphragms

Pointer

Aluminum with micrometer adjustable

Differential cell

material:

AISI 316L stainless steel;
Monel (Code: SD);
Hastelloy C276 (Code: SE)

Sizes:

160mbar-25bar, mm 100×100
25mbar-100mbar, mm 150×150

Window

Polycarbonate

Differential element filling liquid

silicone fluid (standard)
food compatible fluid (on request)

Differential cell gaskets

nitril rubber (NBR), standard
FPM (viton) on request

Movement

Stainless Steel

Torsion shaft

Stainless Steel

Connection

Standard 1/4"NPT female

Unit of pressure

mbar, bar, kPa, kg/cm and psi for single
or double scale(on request)



Scale angle

270° (scale angle is 180° with ranges 0/25mbar)

Static pressure

for all scale range, apart from the pressure entry in one or both connections:
Static pressure 100bar for range: 160mbar-25bar
Static pressure 25bar for range: 25mbar-100mbar
Static pressure 100bar for range: 25mbar-100mbar (on request-option SY)
Static pressure 200bar for range: 160mbar-25bar (on request-option SX)

Ambient Temperature

-4°F to 140°F (-20°C to 60°C)

Working Temperature

Maximum 120°C/248°F

Protection

IP 55

Thermal drift

With reference to the ambient temperature of 20°C, thermal drift affects the instrument accuracy as $\pm 0.6\%$ every 10°C of variations.

Accuracy

Class 1.6 ($\pm 1.6\%$ of full scale deflection)

Transparente

Note 1: accuracy indicated on the pressure gauge does not consider the interference of an eventually applied electric contact.
Note 2: Standard high pressure port is on the right
Note 3: diaphragm seal affects the accuracy of the instruments according to DS series Catalog according to working temperature.
See DS series Diaphragm Seals page 25

Order Information

Series/ Dial Size/ Case Materials/ Wetted Parts/ Configuration/ Connection Size/ Thread/ Range/ Option

Ordering Code PDD Series

Field No.	Code	Specifications								
1.	<div></div>	PDDSeries								
2.	<div></div>	Dial Size								
	40	4" (100mm)								
	60	6" (150mm)								
3.	<div></div>	Case Material								
	T	AISI 304 stainless steel								
	S	AISI 316 stainless steel								
4.	<div></div>	Wetted Parts Material								
	S	AISI 316 stainless steel								
	L	AISI 316L stainless steel								
	H	Hastelloy C								
	M	Monel								
	Z	Special request								
5.	<div></div>	Configuration								
	A	Direct mounting (Bottom)								
	B	Surface mounting with clamp (Bottom)								
	C	Back panel flush mounting (Bottom)								
6.	<div></div>	D	2" pipe mounting (Bottom)							
	<div></div>	Process Connection Size								
	4	1/4"								
	2	1/2"								
7.	<div></div>	Z	Special request							
	<div></div>	Process Connection Thread								
	NF	NPT Female								
	GF	G Female								
8.	<div></div>	NM	NPT Male							
	GM	G Male								
	ZZ	Special request								
	<div></div>	Range (XXXX)								
9.	<div></div>	mbar	0/25	0/40	0/60	0/100	0/160	0/250	0/400	0/600
	<div></div>	bar	0/1	0/1.6	0/2.5	0/4	0/6	0/10	0/16	0/25
	<div></div>	Options								
	S3	316 case and ring								
	SV	Laminated safety glass								
	SQ	Silicone fluid								
	SF	Fluoride fluid for cryogenic applications (-50°C...60°C)								
	SZ	Protection degree IP 55								
	SM	Maximum adjustable pointer								
	10	Accuracyn 1.0								
9.	<div></div>	SS	Oxygen clean (High pressure port is on the left)							
	<div></div>	SL	High pressure port is on the left (Non oxygen clean request)							
	<div></div>	SC	Surface mounting with clamp							
	<div></div>	SH	Back panel flush mounting							
	<div></div>	SX	Static pressure 250 bar for ranges included between 100 mbar and 25 bar							
	<div></div>	SY	Static pressure 400 bar for ranges included between 100 mbar and 25 bar							
	<div></div>	SK	Static pressure 100 barfor ranges included between 25 mbar and 100 mbar							
	<div></div>	SD	Exotic materials diaphragm,monel							
	<div></div>	SE	Exotic materials diaphragm,hastelloy C276							
	<div></div>	SB	Monel wetted parts minimum pressure range available 0...600 mbar on 180°or ranges included between 100 mbar and 25 bar							
	<div></div>	SG	Monel wetted parts minimum pressure range available 0...60 mbar on 180° for ranges included between 25 mbar and 100 mbar							
	<div></div>	SA	Hastelloy C276 wetted parts minimum pressure range available 0...600 mbar on 180° for ranges included between 100 mbar and 25 bar							
	<div></div>	SJ	Hastelloy C276 wetted parts minimum pressure range available 0...60 mbar on 180° for ranges included between 25 mbar and 100 mbar							
	<div></div>	ZZ	Other connection size available							

Option 1

Maximum adjustable pointer
Laminated Safety Glass
Protection degree IP65
Oxygen cleaning
Silicone fluid
Accuracy 1.0%
2" pipe mounting
Surface mounting with clamp
Back panel flush Mounting
316 case and ring
200bar static pressure
Monel 400 wetted parts
Hastelloy C276 wetted parts
Static pressure 100 bar for range 25 mbar-100mbar
Other connection size available

Option 2

Diaphragm seals(see DS series)
with stainless steel or exotic material diaphragm, with an appropriate bigger diameter, are applicable to tinstrumentshe with ranges included between 60 mbar and 25 bar; in this case the instrument can be identified by the number if the chosen model, adding the reference of the suitable diaphragm seal among those of DS series.

Electric contact(see ECS series)

the instrument can be identified by the number if the chosen model, adding the reference of the switching action as shown in table of ECS series. Differential pressure gauges equipped with electric contacts are available in dry execution only.

Accessories(see W series)

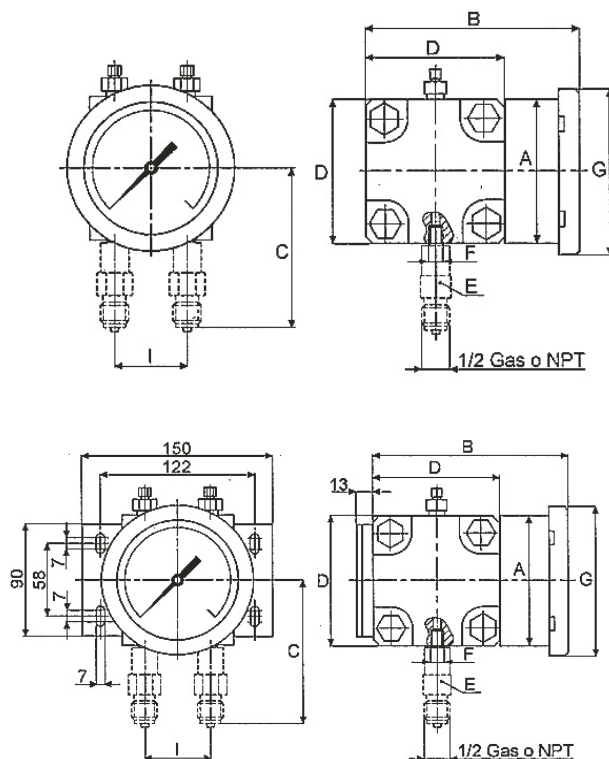
manifold valve.

** The table shows the static pressure values apart from the pressure entry in one or both connections, related range.

Range	Static pressure (bar)		Range	Static pressure (bar)	
	Standard	Special		Standard	Special
0-25 mbar	25	100	0-160 mbar	100	200
0-40 mbar	25	100	0-250 mbar	100	200
0-60 mbar	25	100	0-400 mbar	100	200
0-100 mbar	25	100	0-600 mbar	100	200

Range	Static pressure (bar)		Range	Static pressure (bar)	
	Standard	Special		Standard	Special
0-1 bar	100	200	0-6 bar	100	200
0-1.6 bar	100	200	0-10 bar	100	200
0-2.5 bar	100	200	0-16 bar	100	200
0-4 bar	100	200	0-25 bar	100	200

Dimensions



PDD - A

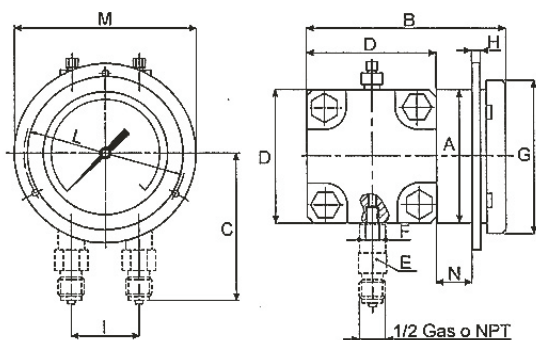
Pressure gauge for Direct Mounting (Bottom)

Model	DN	A	B	C	D	E	F	G	I
(160mbar-25bar)	100	103	150	112	100	22	1/4	118	54
	150	150	150	112	100	22	1/4	166	54
(25mbar-100mbar)	100	103	200	137	150	22	1/4	118	54
	150	150	200	137	150	22	1/4	166	54

PDD - B

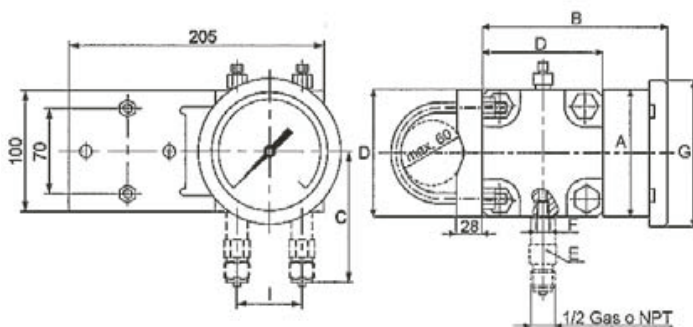
Pressure gauge for surface mounting with clamp

Model	DN	A	B	C	D	E	F	G	I
(160mbar-25bar)	100	103	150	112	100	22	1/4	118	54
	150	150	150	112	100	22	1/4	166	54
(25mbar-100mbar)	100	103	200	137	150	22	1/4	118	54
	150	150	200	137	150	22	1/4	166	54



PDD - C
Pressure gauge for Back panel flush Mounting (Bottom)

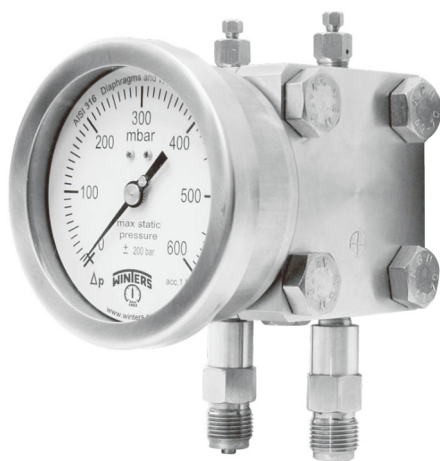
Model	DN	A	B	C	D	E	F	G	H	I	L	M	N
(160mbar-25bar)	100	103	150	112	100	22	1/4	118	7	54	126	140	27
	150	150	150	112	100	22	1/4	166	7	54	178	192	27
(25mbar-100mbar)	100	103	200	137	150	22	1/4	118	7	54	126	140	27
	150	150	200	137	150	22	1/4	166	7	54	178	192	27



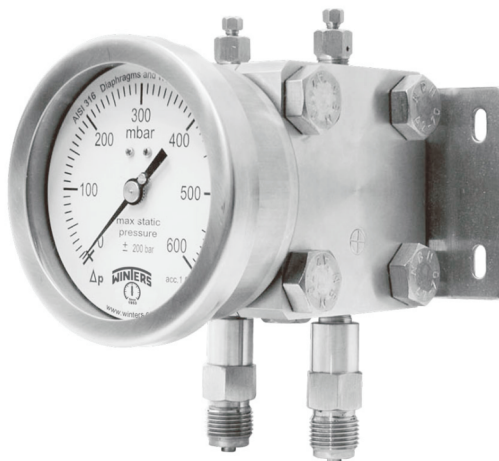
PDD - D
Pressure gauge for 2" pipe mounting

Model	DN	A	B	C	D	E	F	G	I
(160mbar-25bar)	100	103	150	112	100	22	1/4	118	54
	150	150	150	112	100	22	1/4	166	54
(25mbar-100mbar)	100	103	200	137	150	22	1/4	118	54
	150	150	200	137	150	22	1/4	166	54

PDD-A
Pressure gauge for direct mounting



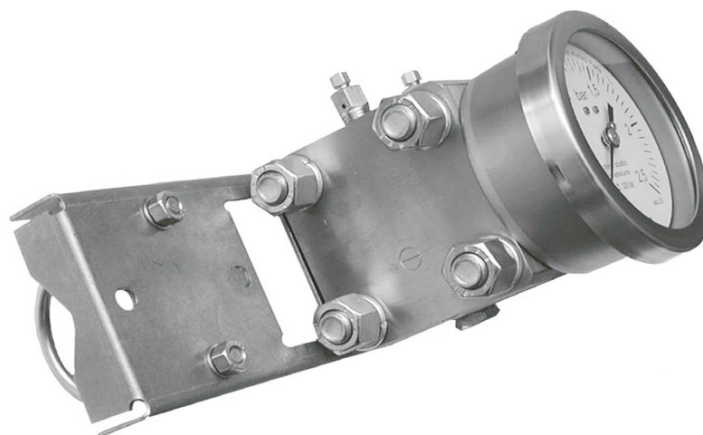
PDD-D
Pressure gauge for surface mounting with clamp



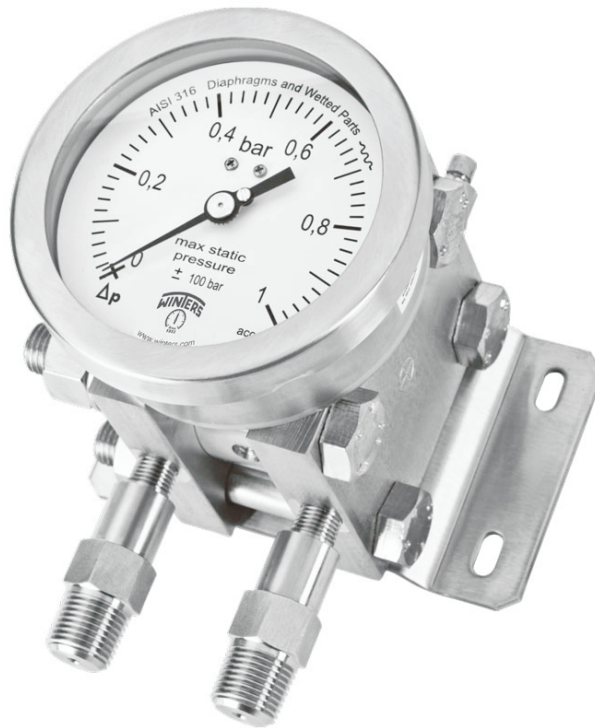
PDD-C
Pressure gauge for back panel flush mounting with 3 hole front flange



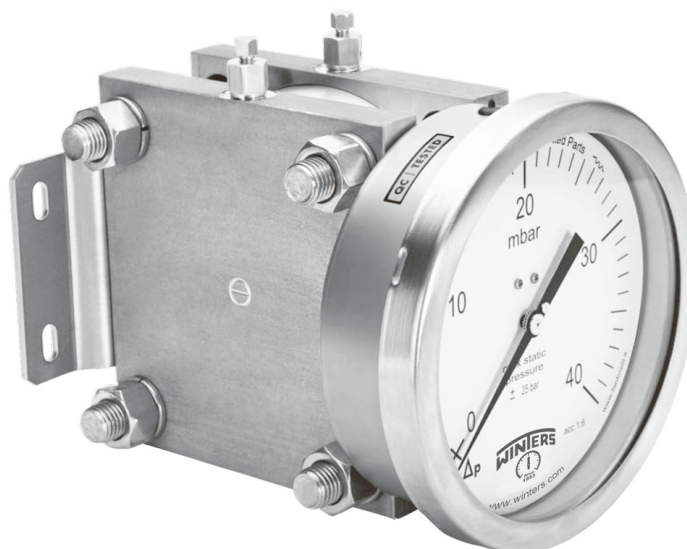
PDD-D
Pressure gauge for horizontal or vertical 2" pipe mounting with AISI 304 SS mounting brackets



Range: 160 mbar...25 bar



Range: 25 mbar...100 mbar



Range: 160 mbar...25 bar

